

THE STAGES AT

PLAYA  VISTA

5600 Campus Center Drive, Bungalow 1
Playa Vista, California 90094

For more information, contact James Reid

T: 310.827.4800 C: 213.494.7511 F: 310-827-4817

THE STAGES AT PLAYA VISTA



Conveniently Located

West of the 405, below the bluffs of Westchester, within easy reach of LAX, Culver City, Santa Monica, Venice, Century City and the South Bay.

Historical Significance

The site where legendary billionaire Howard Hughes created an aerospace empire and built the “flying boat” Spruce Goose airplane.

Largest Stage in Los Angeles

Two 76,000 square foot stages with 72 foot ceilings and large hangar and roll-up doors.

Five Additional Stages to Choose From

Open bay, clear span stages, complete with lighting, power, telephone, water and sewer service. A 30 Foot Cyclorama is available at the Building 45 hangar.

140,000+ SF of Production Support/Office Space

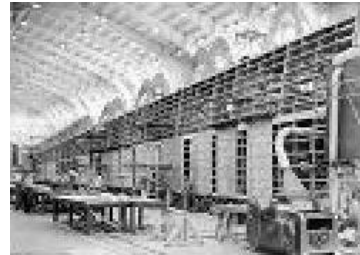
Perfect for production offices, mill, storage space; available for long or short-term lease. Two 4,320 square feet bungalows are located adjacent to hangars for production office use.

Secure Campus Environment

Easy access and ample parking (over 1,400 spaces!).

Recent Productions

“Titanic”, “Independence Day”, “Las Vegas”, “I Spy”, “Van Helsing”, “Team America”, “The District”, “George of the Jungle”, “Lords of Dog Town”, “Fun with Dick & Jane” and “xXx: State of the Union.”



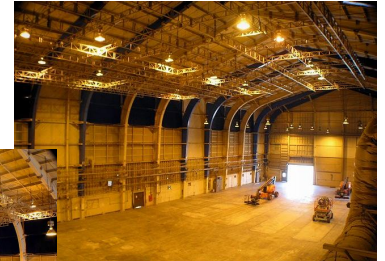
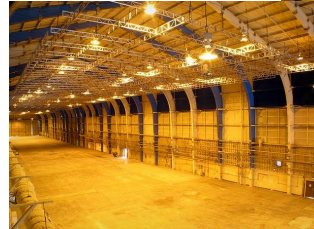
THE STAGES AT PLAYA VISTA

For more information,
contact James Reid
T: 310.827.4800
C: 213.494.7511
F: 310-827-4617

Building 15 - Spruce Goose Hangars

Open Bay, Clear Span
Two 76,000 Sq. Ft. Stages
Ceiling Height: 72'

- North Bay Stage 747' x 102' - 76,194 SF
- South Bay Stage 747' x 102' - 76,194 SF
- Center Bay 32,209 SF of office/storage
- 48,651 SF of adjacent mill space
- Large Hangar and Roll-up Doors
- SpeedGrid System, 8' x 8'bays, Grid Height: 49'



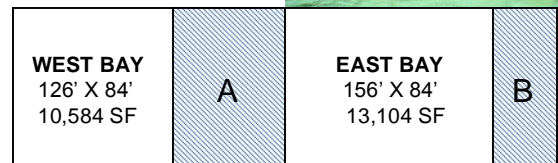
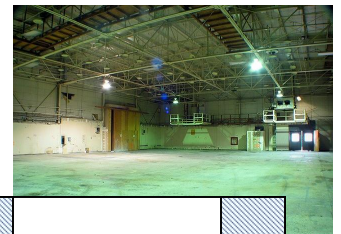
Building 15
Two 76,000 SF Stages

Building 17

Open Bay, Clear Span
10,584 SF and 13,104 SF Stages
Ceiling Height: 23'

- Production Stages
- Mill
- Storage Space
- Production Offices
- Interior Truck Access

Office A – 7,400 SF
Office B – 2 Floors
4,800 SF ea



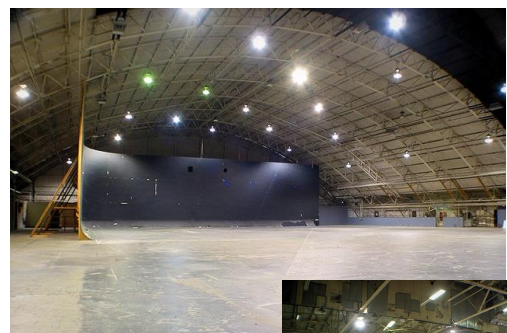
Building 17 – 40,688 SF of Stage/Office Space



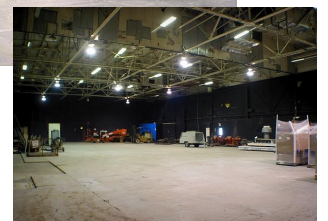
Building 45

Open Bay, Clear Span
33,600 SF Production Stage
30' Cyclorama, 169' x 135'
Ceiling Height: 45'

- Office Space 9,700 SF
- Mill Space and Offices
- Bay Doors



Building 45
33,000 SF Stage
30' Cyclorama



THE STAGES AT PLAYA VISTA

AVAILABLE BUILDINGS

Building Number	Building Description	Ceiling Height (Ft)	Clear Span Length (Ft)	Clear Span Width (Ft)	Clear Span Floor Area (SF)	Total Floor Area (SF)	Proposed Uses
Spruce Goose Hangars							
B-15 South Bay	Open Bay, Clear Span	72	747	102	76,194	76,194	Production Stage <i>Power Supply: 800 amps@4160 volts; Telephone, Water, Sewer</i>
B-15 North Bay	Open Bay, Clear Span	72	747	102	76,194	76,194	Production Stage
B-15 Center Bay	Office, Open Space	15	Varies by room	58	Varies	32,209	Stage construction, support offices, storage, wardrobe
B-14	Mill, Office, Open Bay	39	Varies by room	Varies by room	Varies	25,058	Mills, grip & set lighting, special effects, support offices
B-16	Mill, Office, Open Bay	33	Varies by room	Varies by room	Varies	23,539	Mills, grip & set lighting, special effects, support offices
Total Spruce Goose Hangar Square Footage						233,248	
Building 17 - Two Stages with Office/Mill/Storage Support Space							
B-17 West Bay	Open Bay, Clear Span	22	126	84	10,584	10,584	Production Stage <i>Power Supply: 900 amps@480 volts; 602 amps@120 volts; Telephone, Water, Sewer</i>
B-17 East Bay	Open Bay, Clear Span	22	156	84	13,104	13,104	Production Stage
B-17 West Office	Office	12	Varies by room	Varies by room	Varies	7,400	Production support office
B-17 East Office 1st Fl	Office	12	Varies by room	Varies by room	Varies	4,800	Production support office
B-17 East Office 2nd Fl	Office	12	Varies by room	Varies by room	Varies	4,800	Production support office
Total Building 17 Square Footage						40,688	
Building 45 - Bay Doors, 30 Ft. Cyclorama							
B-45 Bay	Production Stage	45	135	169	22,815	33,000	Production stage, 30 foot Cyclorama <i>Power Supply: 200 amps@480kv; Telephone, Water, Sewer</i>
B-45 Office	Office	45	Varies by room	Varies by room	Varies	9,783	Offices for stage construction, production, prop storage
Total Building 45 Square Footage						42,783	